

BALLENISLES Pods 20a and 20b

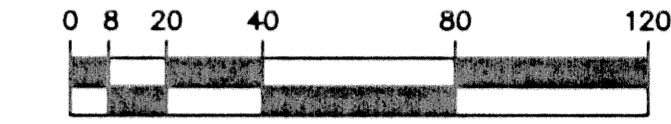
170

BEING A PORTION OF SECTIONS 13 AND 14, TOWNSHIP 42 SOUTH, RANGE 42 EAST, PALM BEACH COUNTY, FLORIDA, CITY OF PALM BEACH GARDENS
SHEET 3 OF 4

OCTOBER 1998

UNPLATTED

SEACOAST UTILITY EASEMENT
ORB 8666, PAGE 785



SCALE: 1" = 40'

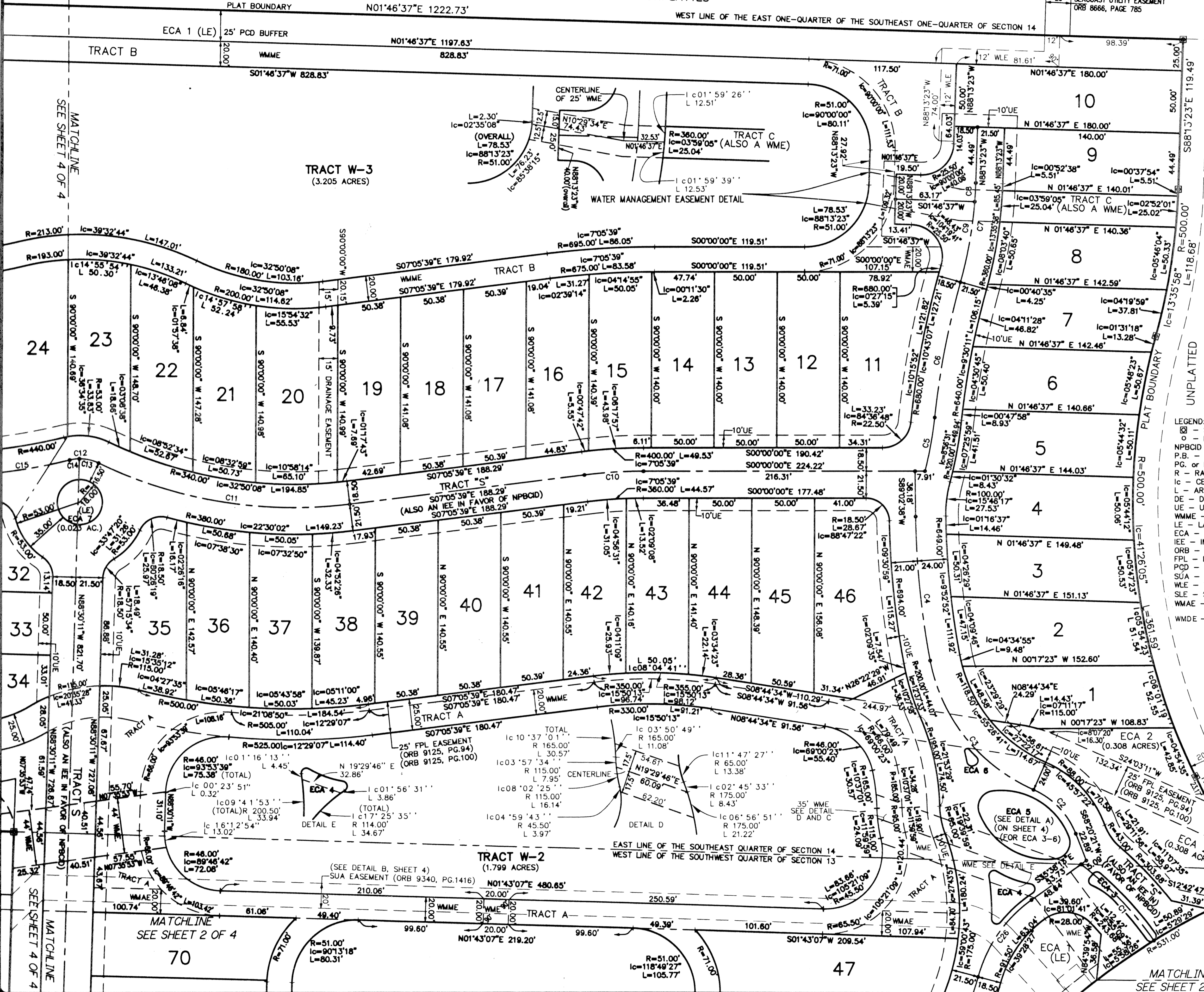
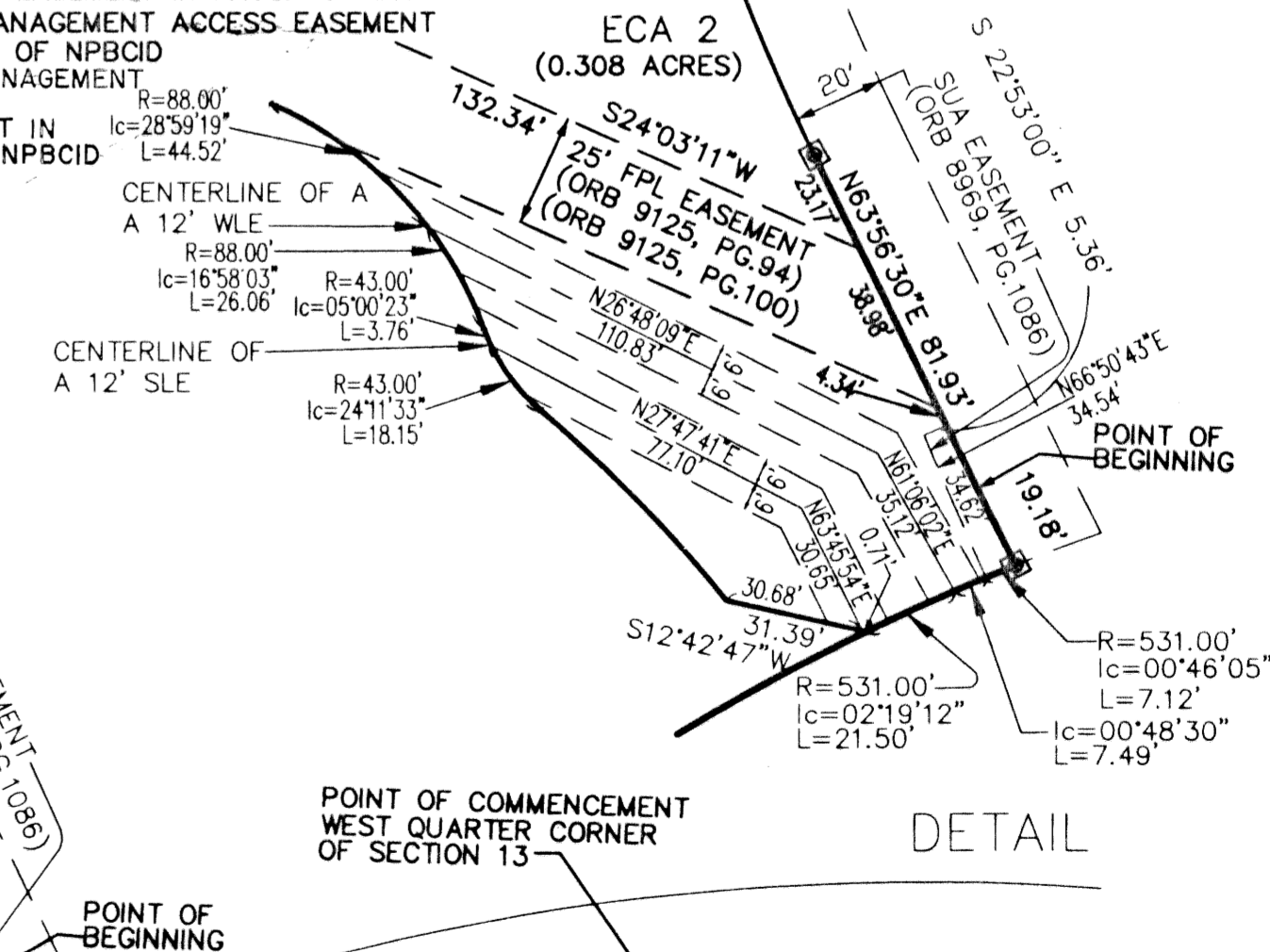
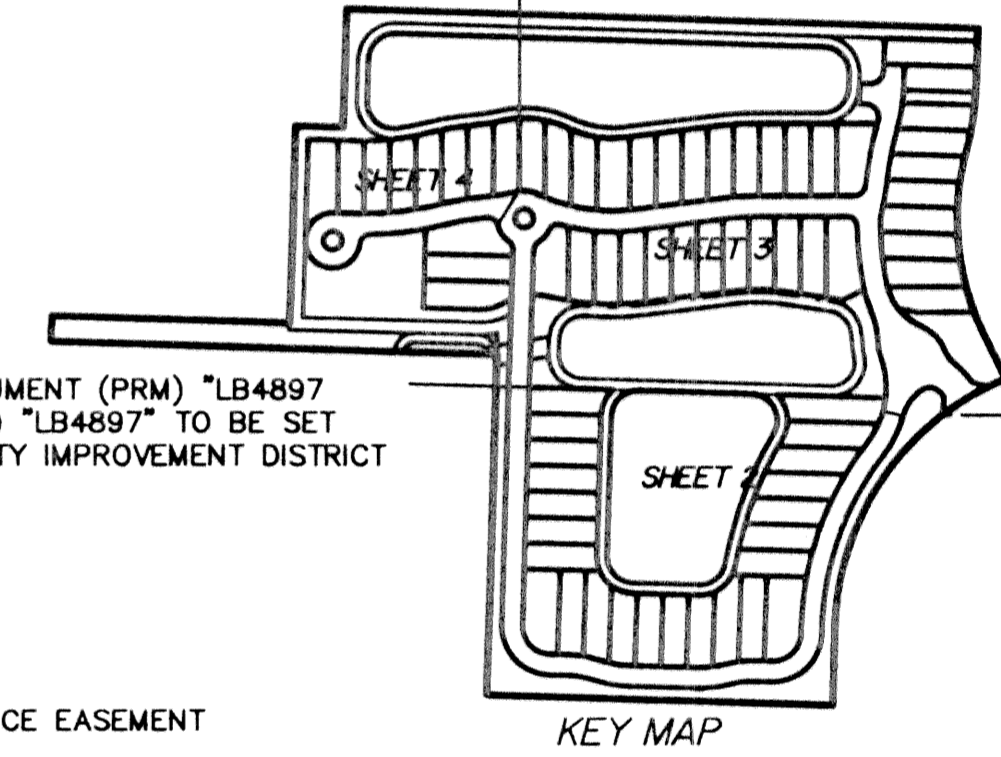
CENTERLINE CURVE TABLE

Curve	Radius	Central Angle	Length	Chord	Bearing
C1	273.68'	17°37'42"	84.20'	83.87'	S46-09-04W
C2	64.00'	44°37'15"	49.84'	48.59'	S46-01-43W
C3	142.50'	55°26'41"	137.90'	132.58'	S51-26-26W
C4	673.00'	9°52'52"	116.06'	115.92'	N84-06-12E
C5	298.50'	8°20'22"	43.45'	43.41'	S79-57-25E
C6	661.50'	9°30'11"	109.71'	109.59'	S79-22-31E
C7	338.50'	13°35'58"	80.34'	80.16'	S81-25-24E
C8	338.50'	2°32'46"	15.04'	15.04'	S86-57-01E
C9	338.50'	11°03'12"	65.30'	65.20'	N80-09-02W
C10	381.50'	7°05'39"	47.24'	47.21'	N03-32-50W
C11	358.50'	32°50'08"	205.45'	202.65'	S09-19-25W
C12	34.50'	39°32'44"	23.81'	23.34'	S05-58-07W
C13	34.50'	26°27'15"	15.93'	15.79'	S12-30-51W
C14	34.50'	13°05'29"	7.88'	7.87'	S07-15-31E
C15	458.50'	8°57'50"	71.73'	71.66'	N09-19-20W
C26	110.00'	39°28'27"	75.78'	74.29'	S55-22-26E

AREA TABLE:

TRACT A	1.550 ACRES
TRACT B	1.223 ACRES
TRACT C	0.080 ACRES
TRACT R	0.854 ACRES
TRACT S	3.857 ACRES
ECA 1	3.646 ACRES
ECA 2	0.308 ACRES
ECA 3	0.015 ACRES
ECA 4	0.020 ACRES
ECA 5	0.063 ACRES
ECA 6	0.002 ACRES
ECA 7	0.023 ACRES
ECA 8	0.023 ACRES
W-1	2.258 ACRES
W-2	1.799 ACRES
W-3	3.205 ACRES

- LEGEND:
- PRM - SET PERMANENT REFERENCE MONUMENT (PRM) "LB4897"
 - PCP - PERMANENT CONTROL POINT (PCP) "LB4897" TO BE SET
 - NPBCID - NORTHERN PALM BEACH COUNTY IMPROVEMENT DISTRICT
 - P.B. - PLAT BOOK
 - PG. or PGS. - PAGE
 - R - RADIUS
 - IC - CENTRAL ANGLE
 - L - ARC LENGTH
 - DE - DRAINAGE EASEMENT
 - UE - UTILITY EASEMENT
 - WMME - WATER MANAGEMENT MAINTENANCE EASEMENT
 - LE - LANDSCAPE EASEMENT
 - ECA - EXCLUSIVE COMMON AREA
 - IEE - INGRESS-EGRESS EASEMENT
 - ORB - OFFICIAL RECORD BOOK
 - FPL - FLORIDA POWER & LIGHT COMPANY
 - PCD - PLANNED COMMUNITY DISTRICT
 - SUA - SEACOAST UTILITY AUTHORITY
 - SLE - SEWER LINE EASEMENT IN FAVOR OF SUA
 - WMAE - WATER MANAGEMENT ACCESS EASEMENT IN FAVOR OF NPBCID
 - WMDE - WATER MANAGEMENT DRAINAGE EASEMENT IN FAVOR OF NPBCID



PHASE 4 ROADWAY AT BALLENISLES
PLAT BOOK 74, PAGES 194-195

KESHAVARZ & ASSOCIATES, INC.
THIS INSTRUMENT WAS PREPARED BY CHARLES H. ANDERSON
IN THE OFFICES OF KESHAVARZ & ASSOCIATES, INC.
1280 N. CONGRESS AVENUE, SUITE 206
WEST PALM BEACH, FLORIDA 33409
(407) 689-9600 / FAX 689-7476
LICENSED BUSINESS No. 4897

SEE SHEET 2 OF 4
SEE SHEET 4 OF 4
SEE SHEET 4 OF 4
SEE SHEET 4 OF 4